



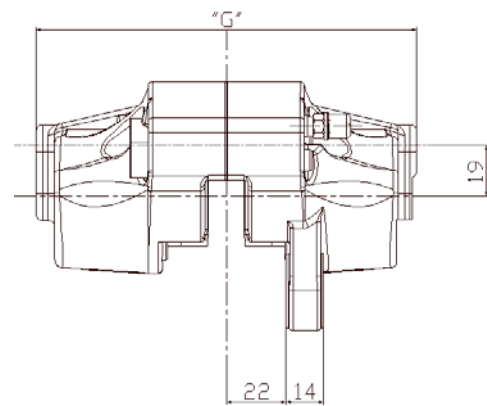
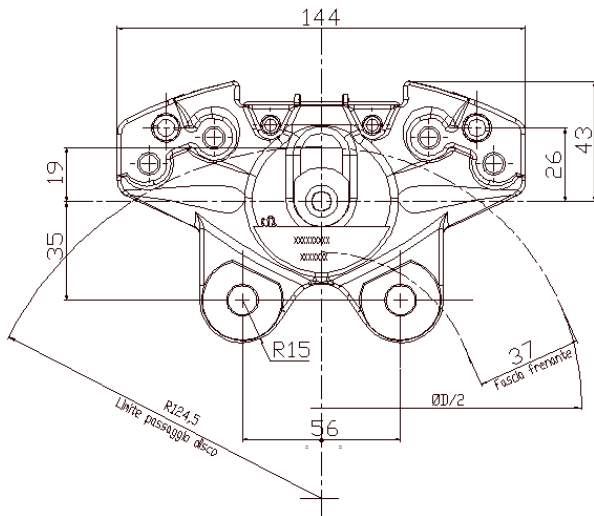
COFAM
group

CATALOGO PINZE FRENO

CALIPERS CATALOGUE

APPLICAZIONI TIPICHE — TYPICAL APPLICATIONS





APPLICAZIONI TIPICHE — TYPICAL APPLICATIONS



TECHNICAL DATA / DATI TECNICI

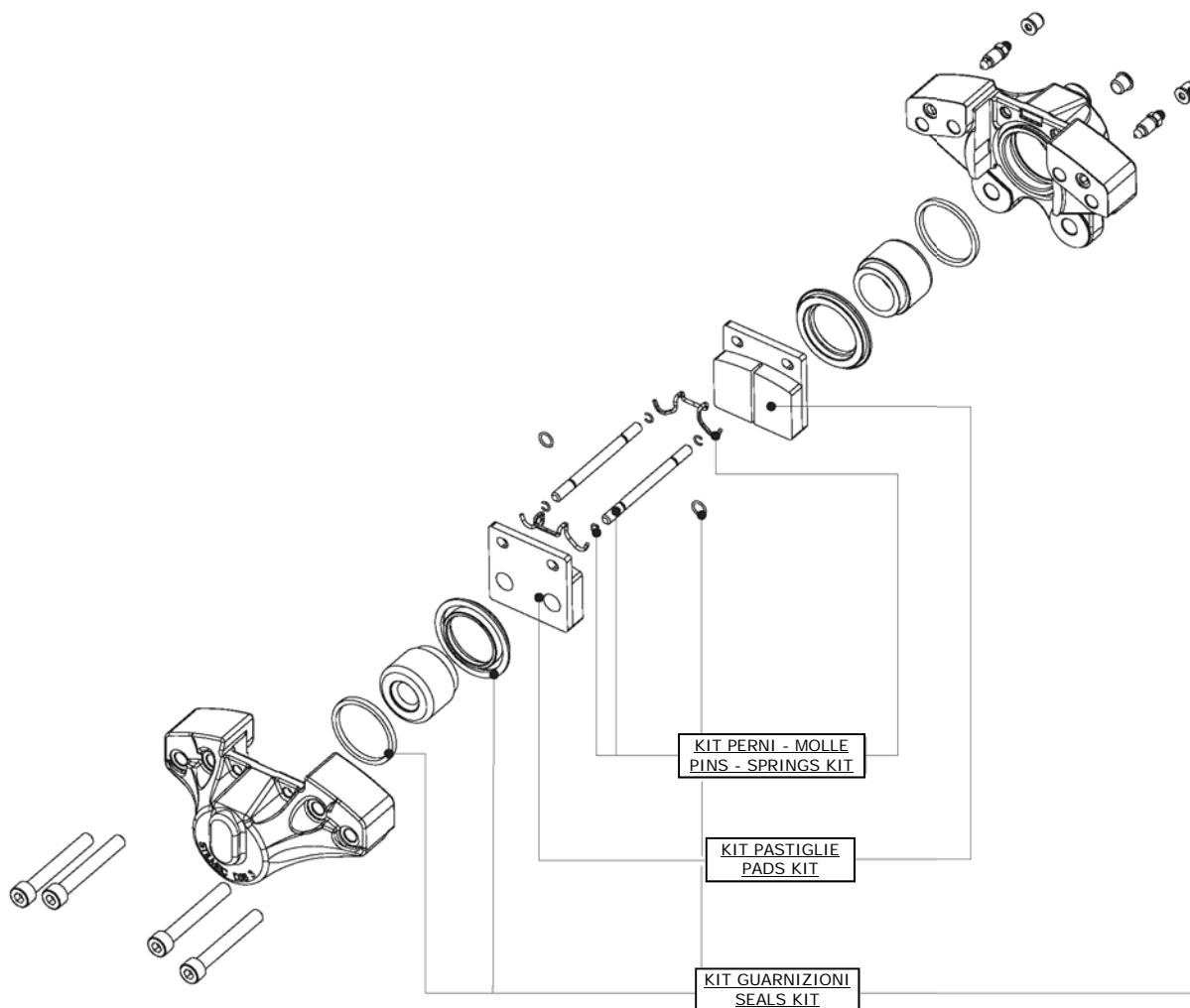
Numero e diametro pistoni	Number and diameter of pistons	2x38	mm
Pressione massima di funzionamento	Maximum working pressure	150	bar
Superficie pastiglie	Pads area	2x19.8	cm ²
Diametro del disco (min ÷ max)	Disc diameter (min ÷ max)	180 ÷ 280	mm
Spessore disco max e min. usurato	Disc thickness, max and min. worn	9 ÷ 11	mm
Posizione di montaggio	Mounting location	h. 3 & 9	
Fluido di azionamento	Actuation fluid	See below	
Assorbimento volumetrico a 150bar	Fluid displacement at 150 bar	1.8	cm ³
Raggio efficace Re	Effective rolling radium Re	Ød/2 -19	mm

Compressivi Standard / Standard products

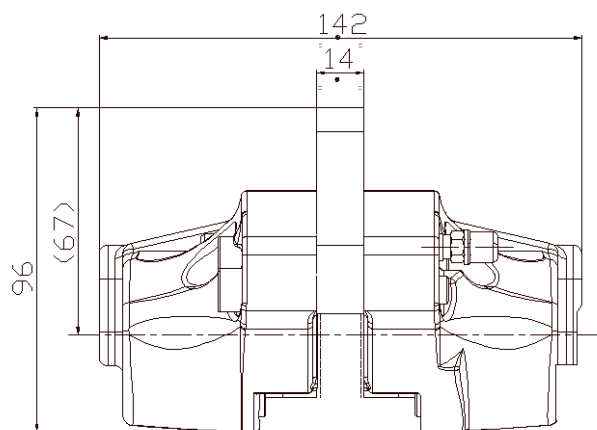
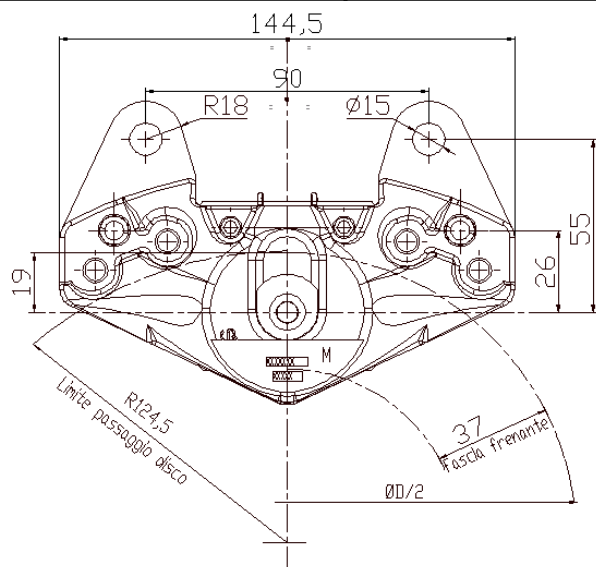
Codice N. Code N.	Fluido di alimentazione Actuation fluid	"G"
771109000	DOT3 DOT4	131
1021.2710	Mineral oil	131
1021.2701	Mineral oil	142
1021.1701	DOT3 DOT4	142



* Sono a disposizione ulteriori modelli personalizzati;
Further customized products are available;



N. DESCRIZIONE	DESCRIPTION	Codice Code N.
KIT PASTIGLIE	PADS KIT	1029.1407
KIT GUARNIZIONI	BRAKE FLUID SEALS KIT	1029.0301
KIT GUARNIZIONI	MINERAL OIL SEALS KIT	1029.1301
KIT PERNI - MOLLE	PINS - SPRINGS KIT	1029.0531



APPLICAZIONI TIPICHE — TYPICAL APPLICATIONS



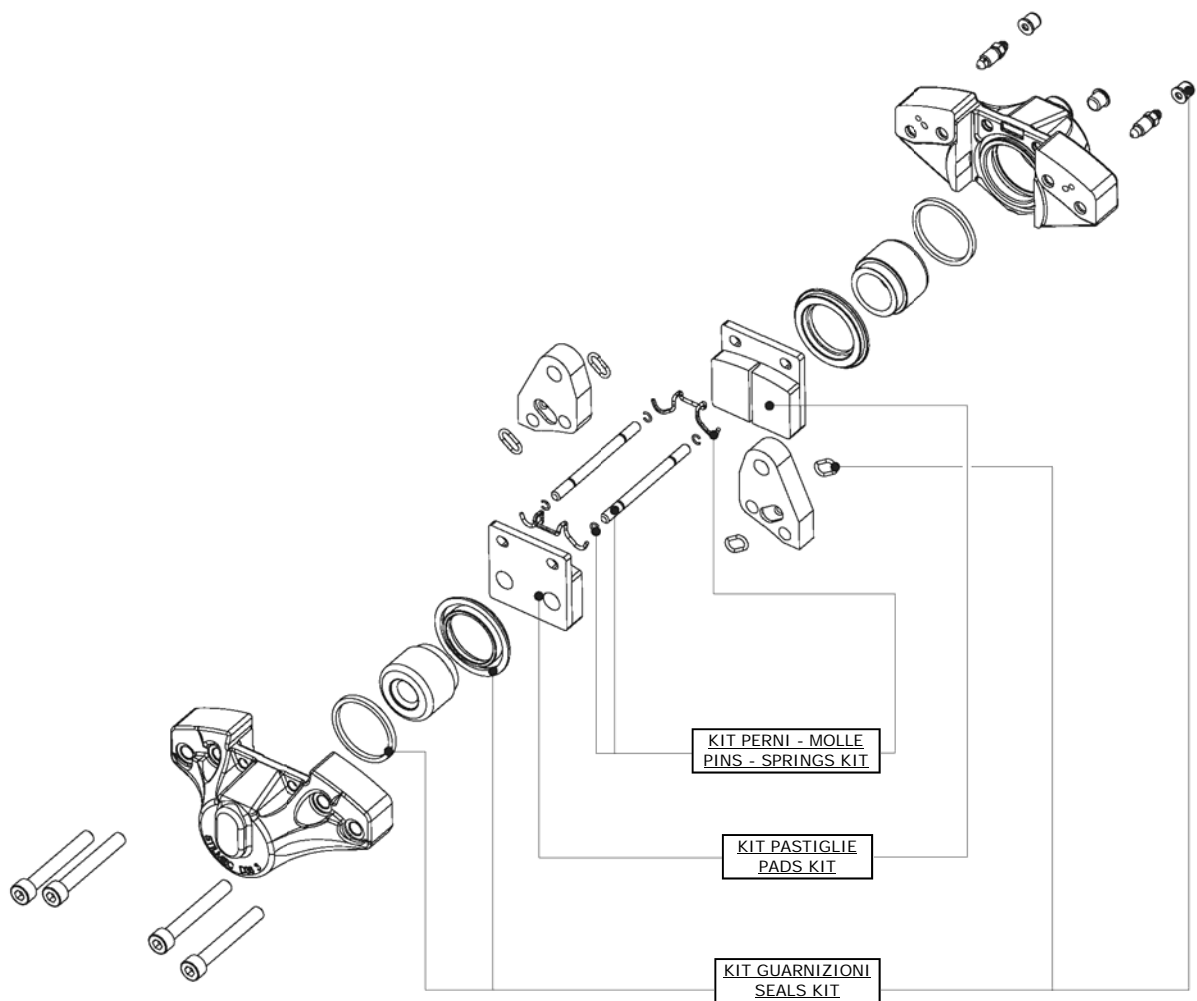
TECHNICAL DATA / DATI TECNICI

Numero e diametro pistoni	Number and diameter of pistons	2x38	mm
Pressione massima di funzionamento	Maximum working pressure	150	bar
Superficie pastiglie	Pads area	2X19.8	cm ²
Diametro del disco (min ÷ max)	Disc diameter (min ÷ max)	180 ÷ 280	mm
Spessore disco max e min. usurato	Disc thickness, max and min. worn	9 ÷ 10	mm
Posizione di montaggio	Mounting location	h. 3 & 9	
Fluido di azionamento	Actuation fluid	See below	
Assorbimento volumetrico a 150bar	Fluid displacement at 150 bar	2.8	cm ³
Raggio efficace Re	Effective rolling radium Re	$\varnothing d/2-19$	mm

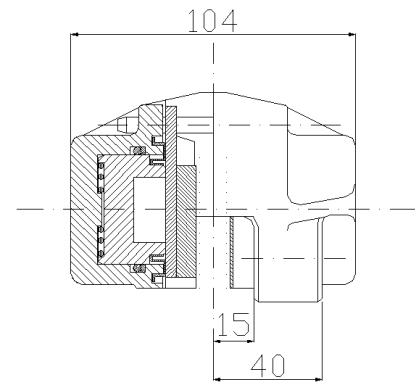
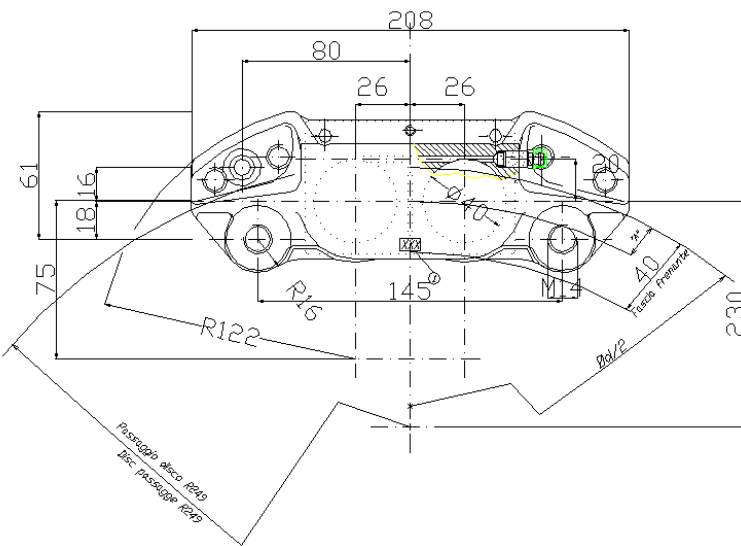
Complessivi Standard / Standard products

Codice N. Code N.	Fluido di alim. Actuation fluid
1022.2701 1022.1701	Mineral oil Brake fluid DOT3 DOT4





DESCRIZIONE	DESCRIPTION	Codice Code N.
KIT PERNI - MOLLE	PINS—SPRINGS KIT	1029.0531
KIT PASTIGLIE	PADS KIT	1029.1407
KIT GUARNIZIONI	MINERAL OIL SEALS KIT	1029.1302
KIT GUARNIZIONI	BRAKE FLUID SEALS KIT	1029.0302



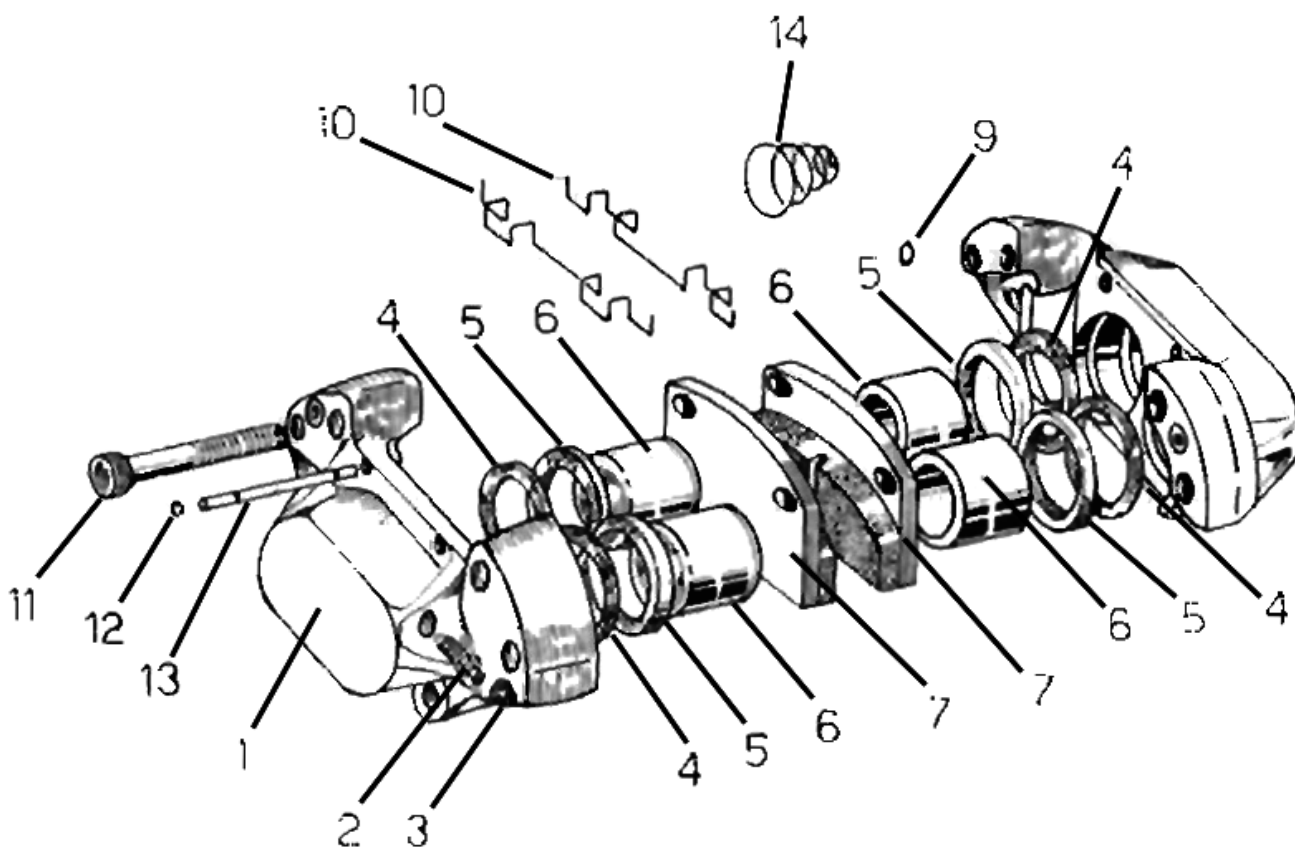
APPLICAZIONI TIPICHE — TYPICAL APPLICATIONS



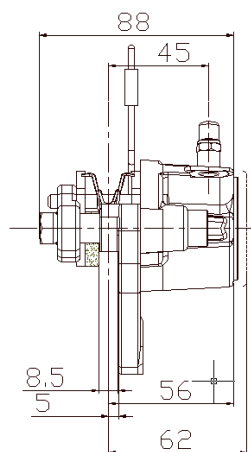
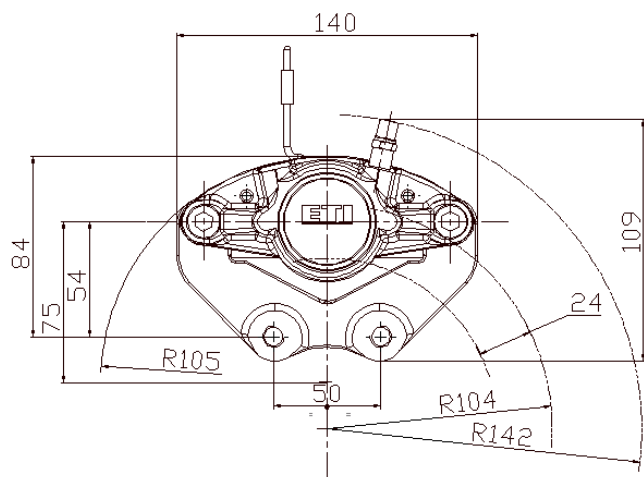
TECHNICAL DATA / DATI TECNICI

Numero e diametro pistoni	Number and diameter of pistons	4x40	mm
Pressione massima di funzionamento	Maximum working pressure	120	bar
Superficie pastiglie	Pads area	2x40	cm ²
Diametro del disco (min ÷ max)	Disc diameter (min ÷ max)	300 ÷ 500	mm
Spessore disco max e min. usurato	Disc thickness, max and min. worn	12 ÷ 14	mm
Posizione di montaggio	Mounting location	h.9-15	
Fluido di azionamento	Actuation fluid	DOT3 DOT4	
Assorbimento volumetrico a 120bar	Fluid displacement at 120 bar	2.8	cm ³
Raggio efficace Re	Effective rolling radium Re	Dd/2 - A	mm





POS. N.	DESCRIZIONE	DESCRIPTION	Codice Code N.
10-12-13	KIT PERNI - MOLLE	PINS AND SPRINGS KIT	1189.0531
7	KIT PASTIGLIE	PADS KIT	1189.1407
3-4-5-9	KIT GUARNIZIONI	SEALS KIT	1189.0301
	ASSIEME PINZA DESTRA	RIGHT CALIPER ASSEMBLY	1181.1702
	ASSIEME PINZA SINISTRA	LEFT CALIPER ASSEMBLY	1181.1701



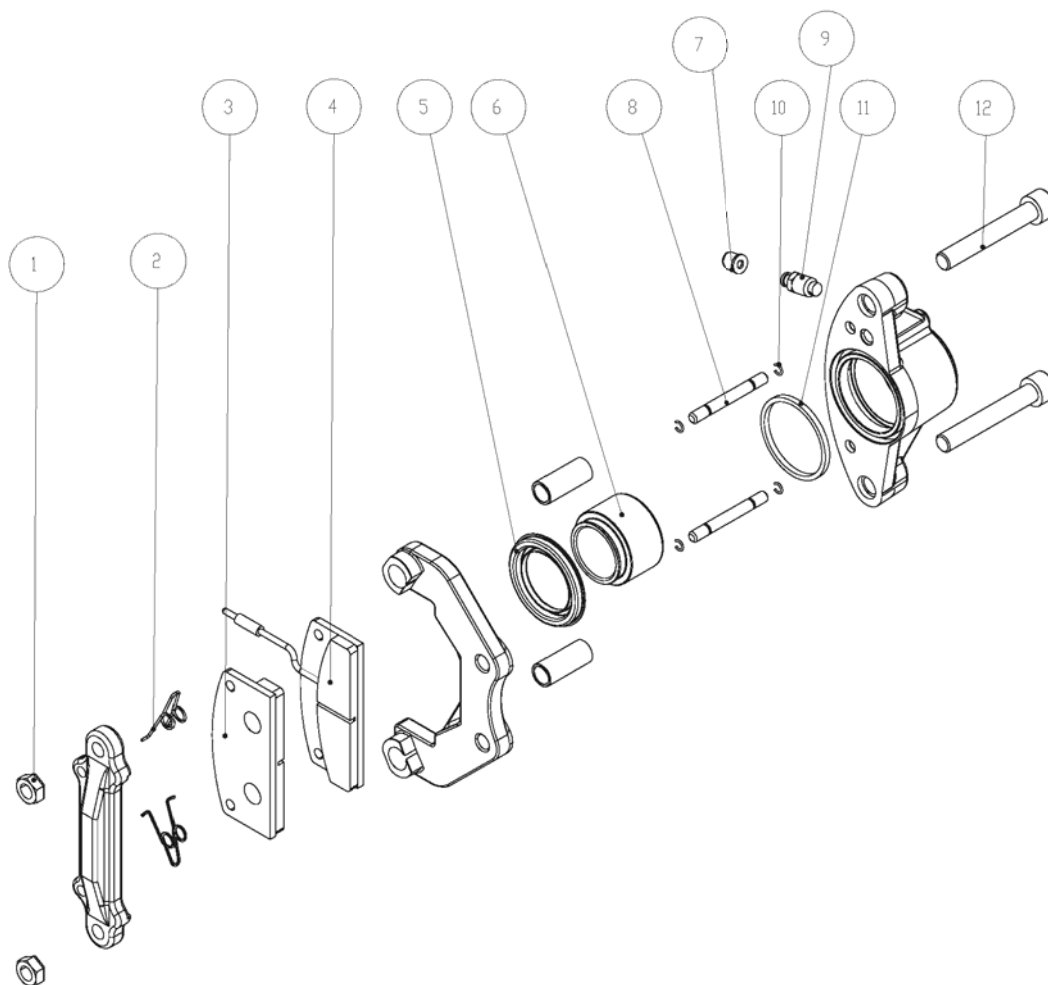
APPLICAZIONI TIPICHE — TYPICAL APPLICATIONS



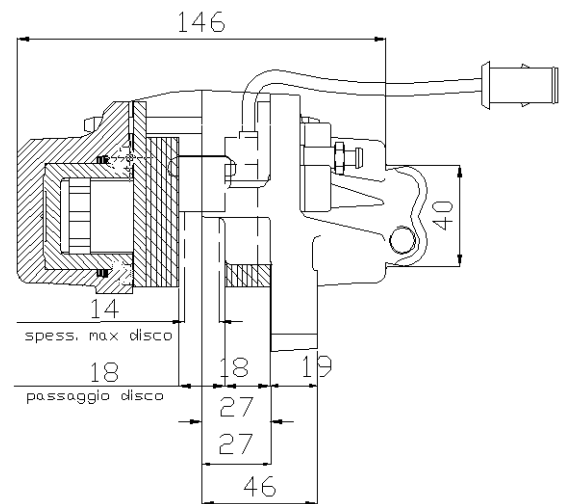
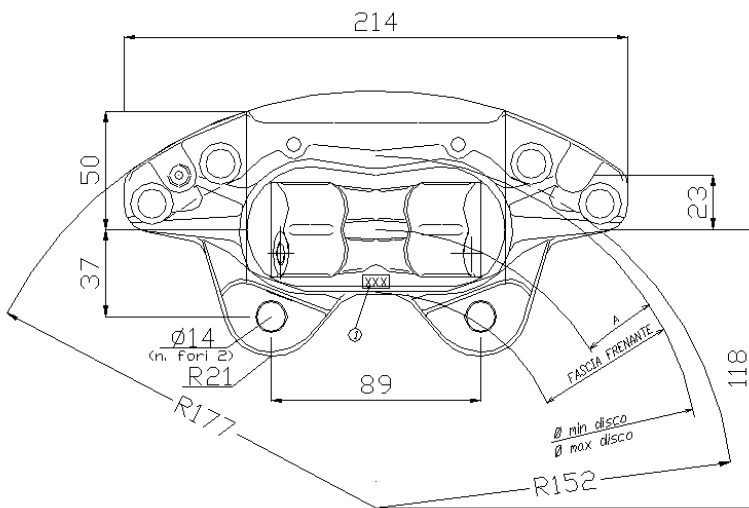
TECHNICAL DATA / DATI TECNICI

Numero e diametro pistoni	Number and diameter of pistons	1x42	mm
Pressione massima di funzionamento	Maximum working pressure	80	bar
Superficie pastiglie	Pads area	2x19.8	cm ²
Diametro del disco (min ÷ max)	Disc diameter (min ÷ max)	209	mm
Spessore disco max e min. usurato	Disc thickness, max and min. worn	6.5-5.5	mm
Posizione di montaggio	Mounting location	h. 3 & 9	
Fluido di azionamento	Actuation fluid	DOT3 DOT4	
Assorbimento volumetrico a 150bar	Fluid displacement at 150 bar	1	cm ³
Raggio efficace Re	Effective rolling radius Re	92	mm





POS. N.	DESCRIZIONE	DESCRIPTION	Codice Code N.
3 - 4	KIT PASTIGLIE	PADS KIT	1259.1409
5 - 7 - 11	KIT GUARNIZIONI	SEALS KIT	RC730101004
6	KIT PISTONE	PISTON KIT	1259.0102
8 - 10	KIT PERNI + MOLLE	PINS + SPRINGS KIT	1209.0531
2	KIT MOLLA RITEGNO PASTIGLIA	SPRING KIT	RC750911005
9	VITE SPURGO	AIR DRAIN SCREW	1249.1601
1	DADO ESAGONALE	NUT	0600.0050
12	VITE TCEI	SCREW	3601.0031



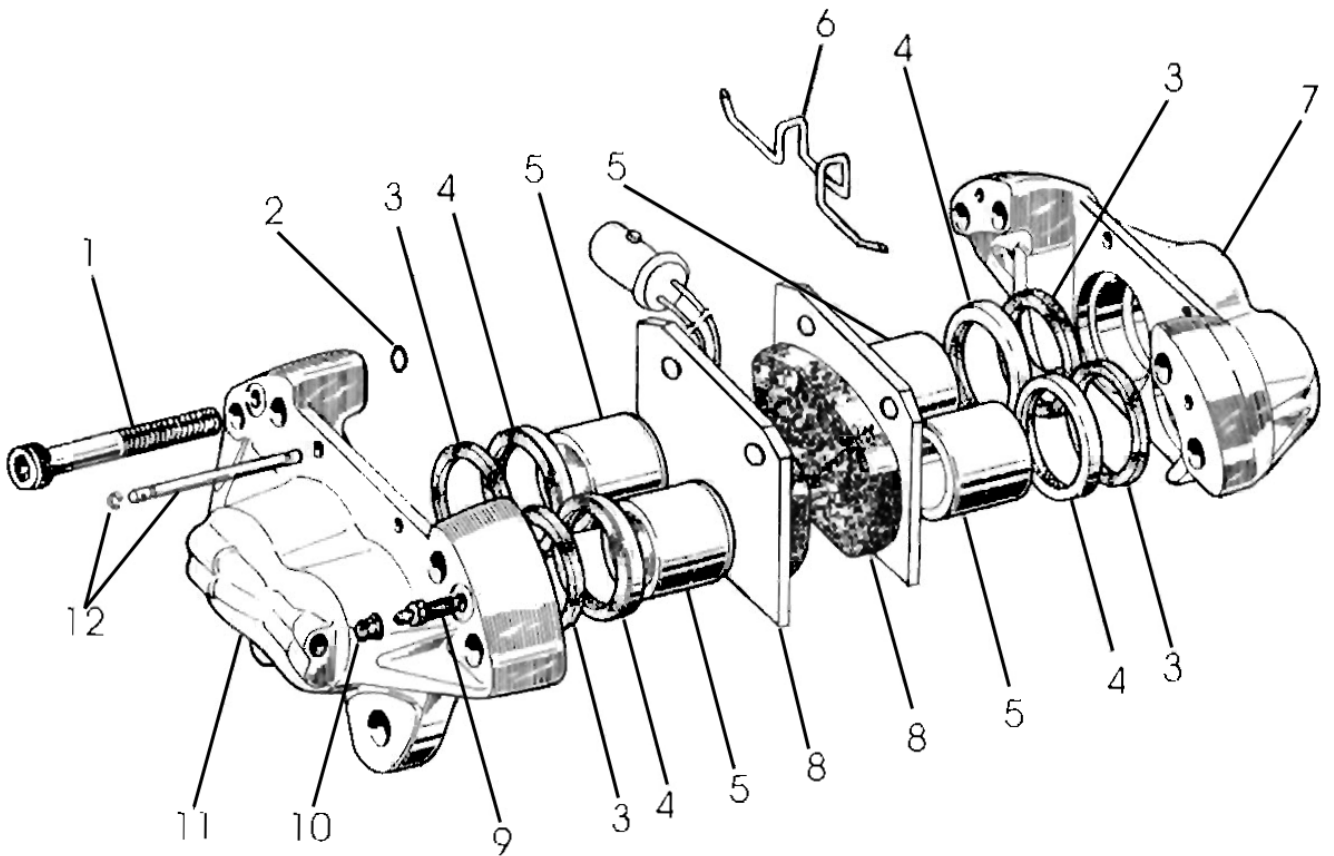
APPLICAZIONI TIPICHE — TYPICAL APPLICATIONS



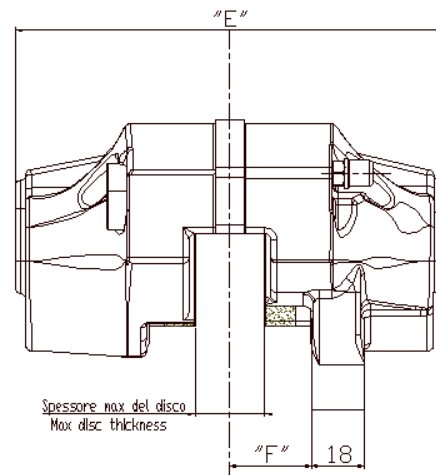
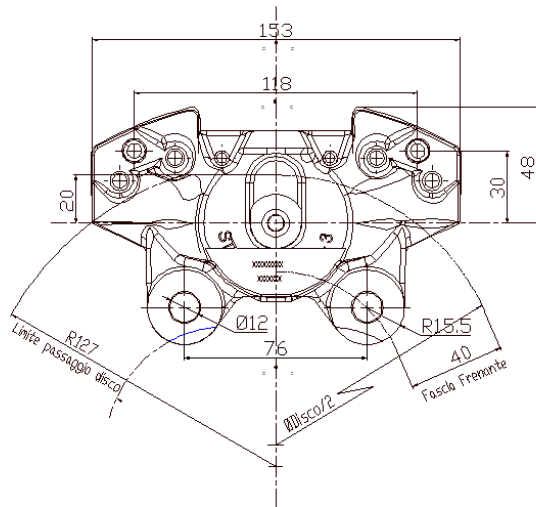
TECHNICAL DATA / DATI TECNICI

Numero e diametro pistoni	Number and diameter of pistons	4x42	mm
Pressione massima di funzionamento	Maximum working pressure	130	bar
Superficie pastiglie	Pads area	2X53	cm ²
Diametro del disco (min ÷ max)	Disc diameter (min ÷ max)	220 ÷ 350	mm
Spessore disco max e min. usurato	Disc thickness, max and min. worn	12.7-14	mm
Posizione di montaggio	Mounting location	h.3 & 9	
Fluido di azionamento	Actuation fluid	DOT3 DOT4	
Assorbimento volumetrico a 130bar	Fluid displacement at 130 bar	3.7	cm ³
Raggio efficace Re	Effective rolling radium Re	Dd/2-A	mm





POS. N.	DESCRIZIONE	DESCRIPTION	Codice Code N.
6-12	KIT PERNI	PINS KIT	1139.0531
8	KIT PASTIGLIE	PADS KIT	1139.1407
2-3-4-10	KIT GUARNIZIONI	SEALS KIT	1139.1301
	ASSIEME PINZA DESTRA	RIGHT CALIPER ASSEMBLY	1131.1702
	ASSIEME PINZA SINISTRA	LEFT CALIPER ASSEMBLY	1131.1701



APPLICAZIONI TIPICHE — TYPICAL APPLICATIONS



TECHNICAL DATA / DATI TECNICI

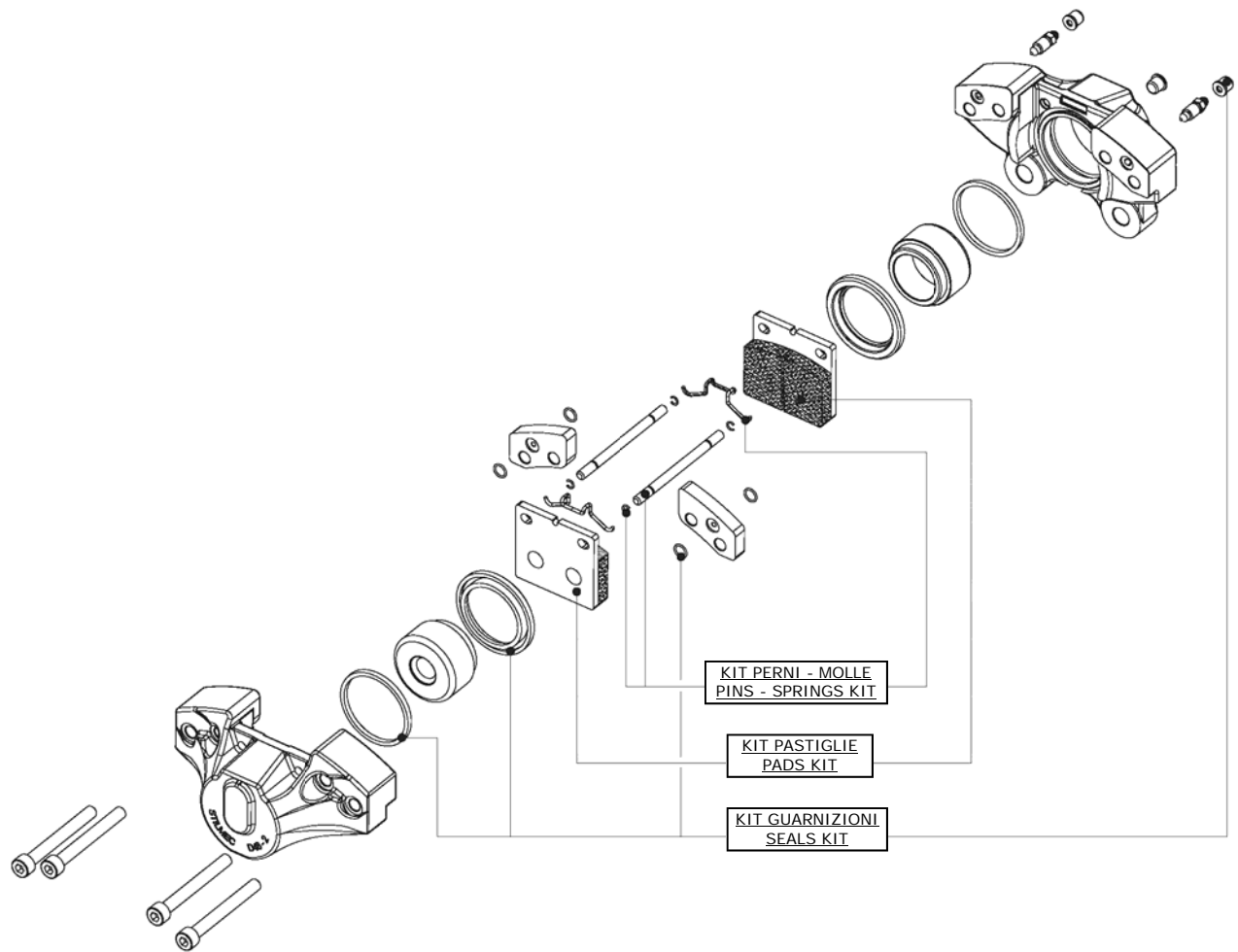
Numero e diametro pistoni	Number and diameter of pistons	2x48	mm
Pressione massima di funzionamento	Maximum working pressure	150	bar
Superficie pastiglie	Pads area	2x25	cm ²
Diametro del disco (min ÷ max)	Disc diameter (min ÷ max)	200 ÷ 320	mm
Spessore disco max e min. usurato	Disc thickness, max and min. worn	10 ÷ 12.5	mm
Posizione di montaggio	Mounting location	h. 3 & 9	
Fluido di azionamento	Actuation fluid	See below	
Assorbimento volumetrico a 150bar	Fluid displacement at 150 bar	2.9	cm ³
Raggio efficace Re	Effective rolling radium Re	Ød/2 -20	mm

Complessivi Standard / Standard products

Codice N. Code N.	Fluido di alimentazione Actuation fluid	"F"	"E"
7740B000	Mineral oil	26.75	144
1031.1621	DOT3 DOT4	22.75	128
1031.2701	Mineral oil	22.75	136
1031.1726	DOT3 DOT4	26.75	144
1031.1701	DOT3 DOT4	22.75	136
1031.1625	DOT3 DOT4	27.75	146
1031.1611	DOT3 DOT4	22.75	130

* Sono a disposizione ulteriori modelli personalizzati;
Further customized products are available;





DESCRIZIONE	DESCRIPTION	Codice Code N.
KIT PASTIGLIE	PADS KIT	1039.1407
KIT PERNI—MOLLE ⁽¹⁾	PINS AND SPRINGS KIT	1039.0531
KIT GUARNIZIONI ⁽²⁾	SEALS KIT	1039.0301

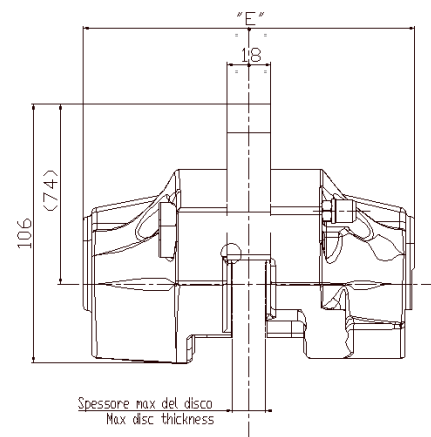
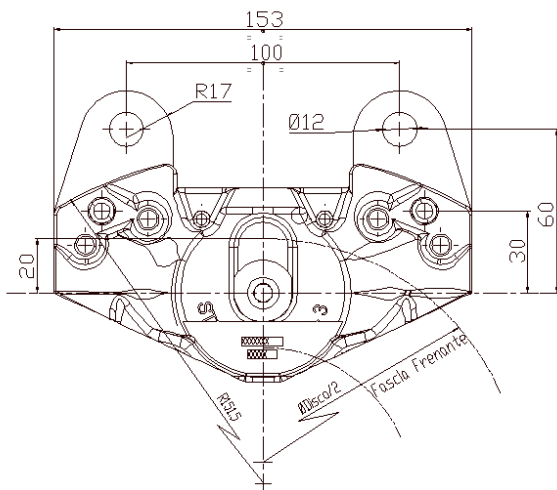
- ⁽¹⁾ per le pinze 77340B000 - 1031.1726 - 1031.1625 il kit perni - molle è il 1039.0532;
For the callipers 77340B000 - 1031.1726 - 1031.1625 the pins and springs kit is 1039.0532;
- ⁽²⁾ Per le pinze 77340B000 - 1031.1726 - 1031.1625 il kit guarnizioni è il 1039.1302;
For the callipers 77340B000 - 1031.1726 - 1031.1625 the seal kit is 1039.1302;



PINZA IDRAULICA 2-48 HYDRAULIC CALLIPER

Disegno/Drawing:

TN773800000



APPLICAZIONI TIPICHE — TYPICAL APPLICATIONS



TECHNICAL DATA / DATI TECNICI

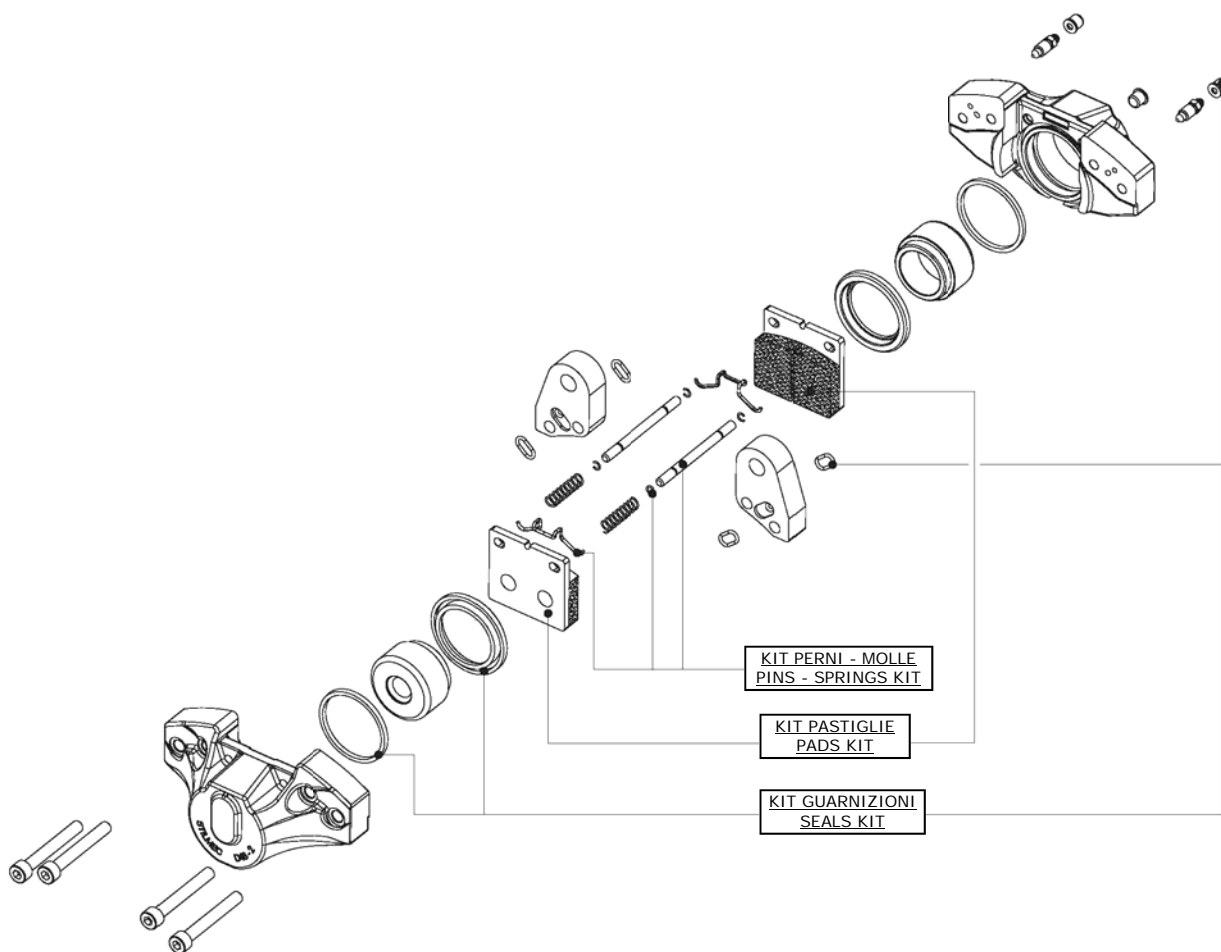
Numero e diametro pistoni	Number and diameter of pistons	2x48	mm
Pressione massima di funzionamento	Maximum working pressure	150	bar
Superficie pastiglie	Pads area	2x25	cm ²
Diametro del disco (min ÷ max)	Disc diameter (min ÷ max)	200 ÷ 320	mm
Spessore disco max e min. usurato	Disc thickness, max and min. worn	10 ÷ 12.5	mm
Posizione di montaggio	Mounting location	h. 3 & 9	
Fluido di azionamento	Actuation fluid	See below	
Assorbimento volumetrico a 150bar	Fluid displacement at 150 bar	2.9	cm ³
Raggio efficace Re	Effective rolling radium Re	Ød/2 -20	mm

Compressivi Standard / Standard products

Codice N. Code N.	Fluido di alim. Actuation fluid	"E"
1032.2701	Mineral oil	136
1032.1705	DOT3 DOT4	145
1032.1701	DOT3 DOT4	136

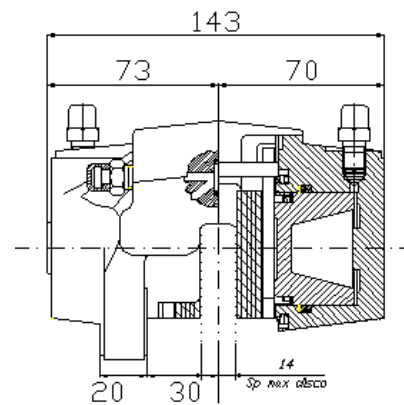
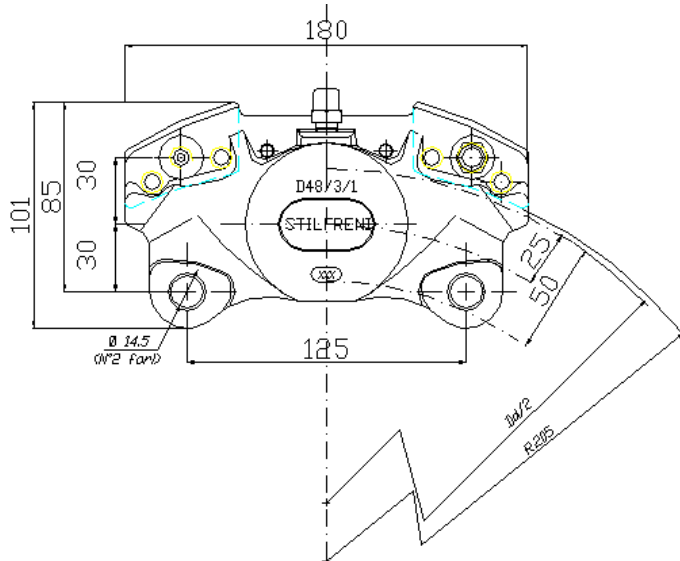
* Sono a disposizione ulteriori modelli personalizzati;
Further customized products are available;





DESCRIZIONE	DESCRIPTION	Codice Code N.
KIT PASTIGLIE	PADS KIT	1039.1407
KIT PERNI—MOLLE ⁽¹⁾	PINS AND SPRINGS KIT	1039.0531
KIT GUARNIZIONI PER OLIO FRENI	BRAKE FLUID SEAL KIT	1039.0302
KIT GUARNIZIONI PER OLIO MINERALE	MINERAL OIL SEAL KIT	1139.1302

⁽¹⁾ Per le pinze 1032.1705 il kit perni - molle è il 1039.0532;
For the callipers 1032.1705 the pins and springs kit is 1039.0532;



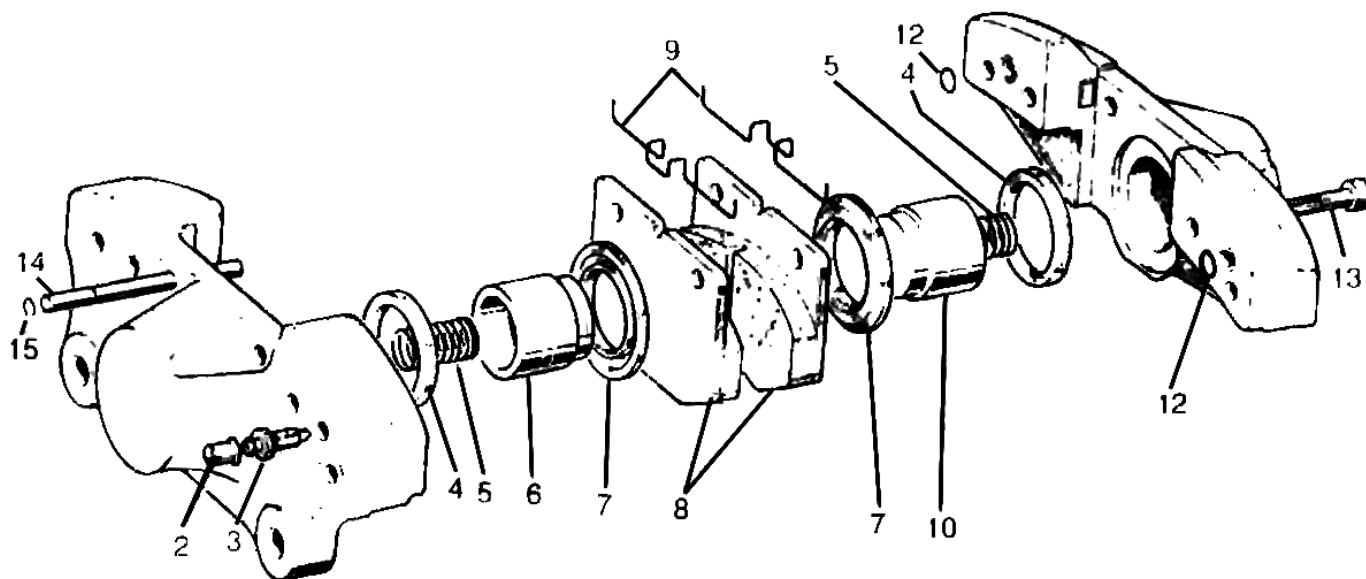
APPLICAZIONI TIPICHE — TYPICAL APPLICATIONS



TECHNICAL DATA / DATI TECNICI

Numero e diametro pistoni	Number and diameter of pistons	2x48	mm
Pressione massima di funzionamento	Maximum working pressure	150	bar
Superficie pastiglie	Pads area	2x38	cm ²
Diametro del disco (min ÷ max)	Disc diameter (min ÷ max)	280 ÷ 400	mm
Spessore disco max e min. usurato	Disc thickness, max and min. worn	12 ÷ 14	mm
Posizione di montaggio	Mounting location	h.9-12-15	
Fluido di azionamento	Actuation fluid	DOT3 DOT4	
Assorbimento volumetrico a 150bar	Fluid displacement at 150 bar	3,6	cm ³
Raggio efficace Re	Effective rolling radium Re	Dd/2 -25	mm





POS. N.	DESCRIZIONE	DESCRIPTION	Codice Code N.
8	KIT PASTIGLIE	PADS KIT	1099.1407
2-4-7-12	SERIE DI REVISIONE GUARNIZIONI N	BRAKE FLUID SEALS KIT	1099.0301
2-4-7-12	SERIE DI REVISIONE GUARNIZIONI P	MINERAL OIL SEALS KIT	1099.1301
9-14-15	KIT PERNI - MOLLE	PINS - SEALING KIT	1099.0531
	ASSIEME PINZA CON GUARNIZIONE N ⁽¹⁾	CALIPER ASSEMBLY WITH N SEAL	1091.1701
	ASSIEME PINZA CON GUARNIZIONE P ⁽²⁾	CALIPER ASSEMBLY WITH P SEAL	1091.2701

⁽¹⁾ N = brake fluid

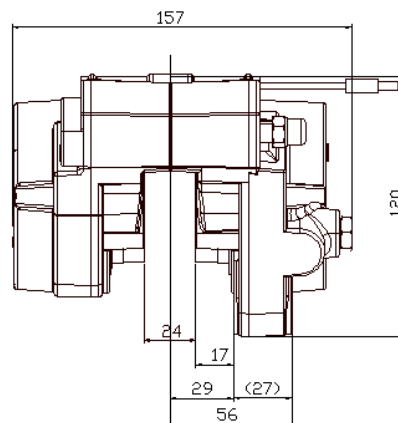
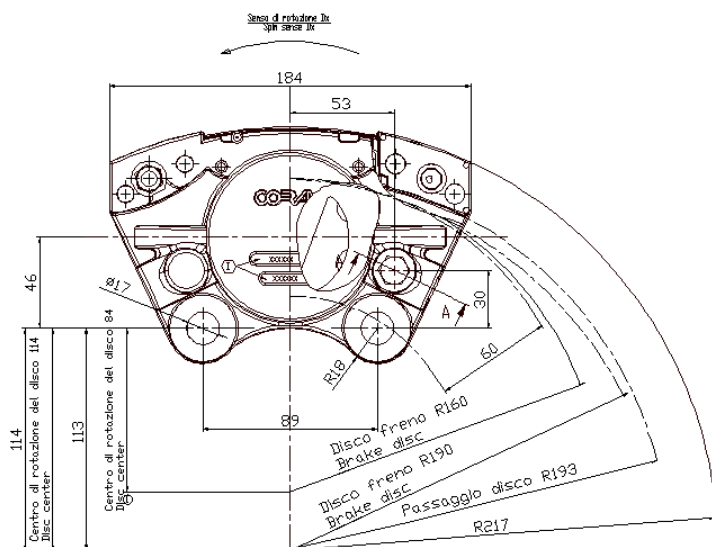
⁽²⁾ P = mineal oil



PINZA IDRAULICA 2X60 HYDRAULIC CALLIPER

Disegno/Drawing:

773900000



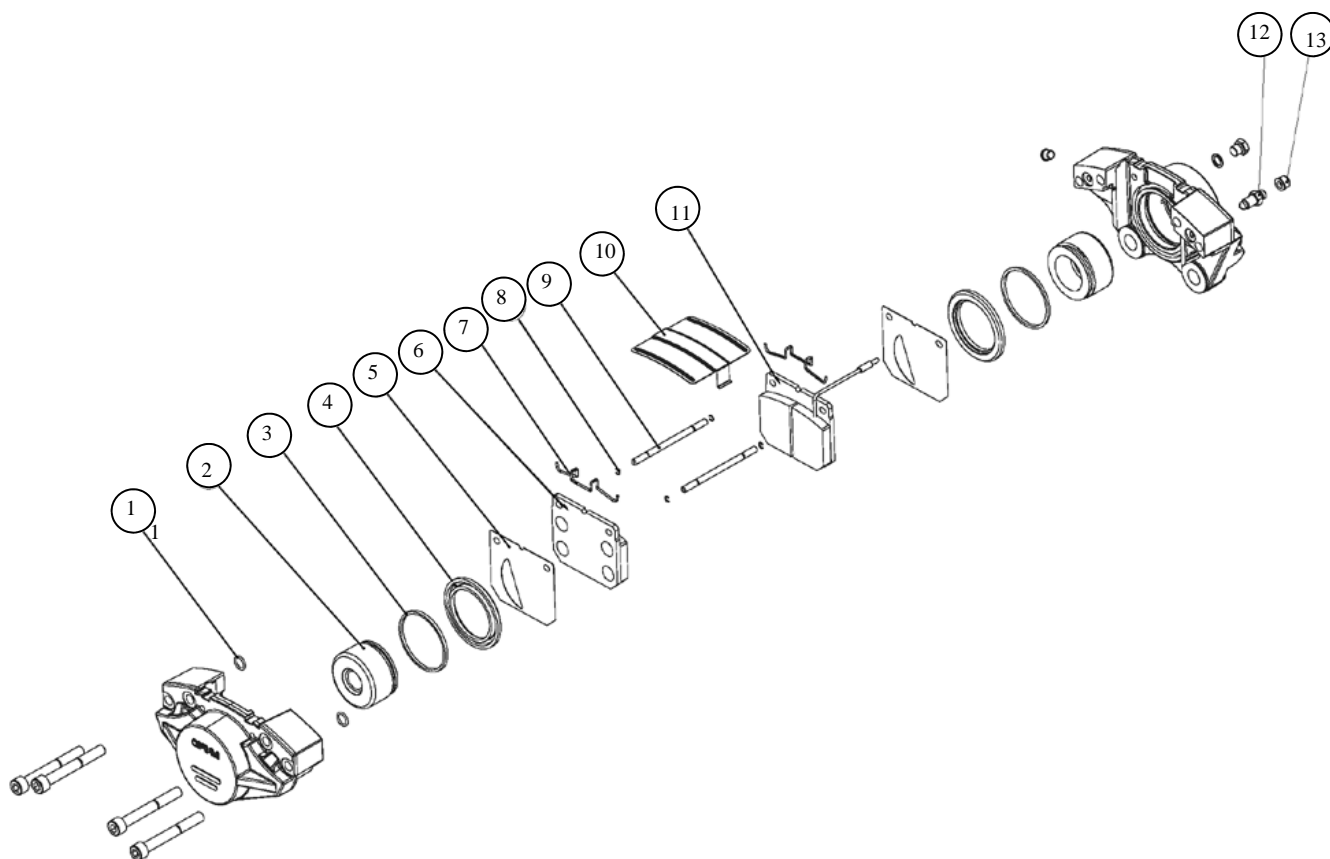
APPLICAZIONI TIPICHE — TYPICAL APPLICATIONS



TECHNICAL DATA / DATI TECNICI

Numero e diametro pistoni	Number and diameter of pistons	2x60	mm
Pressione massima di funzionamento	Maximum working pressure	130	bar
Superficie pastiglie	Pads area	2x50	cm ²
Diametro del disco (min ÷ max)	Disc diameter (min ÷ max)	320 ÷ 380	mm
Spessore disco max e min. usurato	Disc thickness, max and min. worn	20 ÷ 22	mm
Posizione di montaggio	Mounting location	h. 3 & 9	
Fluido di azionamento	Actuation fluid	DOT3 DOT4	
Assorbimento volumetrico a 130bar	Fluid displacement at 130 bar	5,6	cm ³
Raggio efficace Re	Effective rolling radium Re	D/2 -30	mm





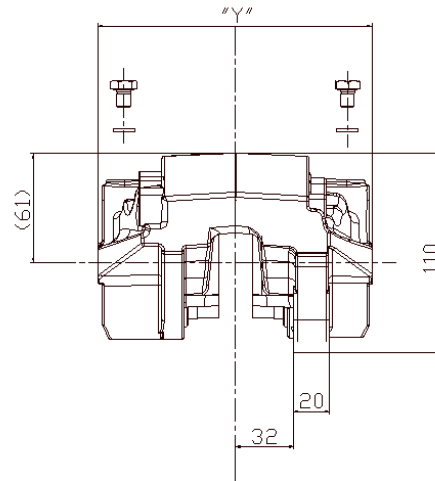
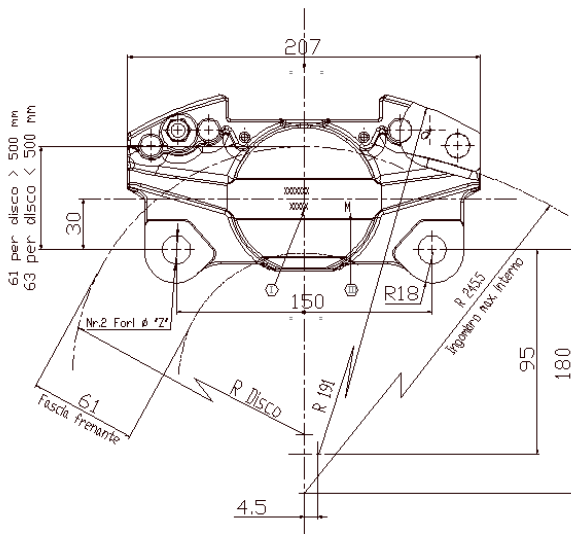
POS. N.	DESCRIZIONE	DESCRIPTION	Codice Code N.
5-6-7-8-9-11	KIT PASTIGLIE + PERNI E MOLLE	PADS + PINS AND SPRINGS KIT	RC773901002
1-3-4	KIT GUARNIZIONI	SEALS KIT	RC773901004
1-2-3-4	KIT PISTONE + GUARNIZIONE	PISTON + SEALING KIT	RC773901005
8-9-12-13	KIT PERNI + VITE SPURGO E GUARNIZ.	PINS + BLEEDING WITH SEAL	RC773901003
10	KIT COPERCHIO	COVER KIT	RC773901103



PINZA IDRAULICA 2-60 HYDRAULIC CALLIPER

Disegno/Drawing:

TN770300000



APPLICAZIONI TIPICHE — TYPICAL APPLICATIONS



TECHNICAL DATA / DATI TECNICI

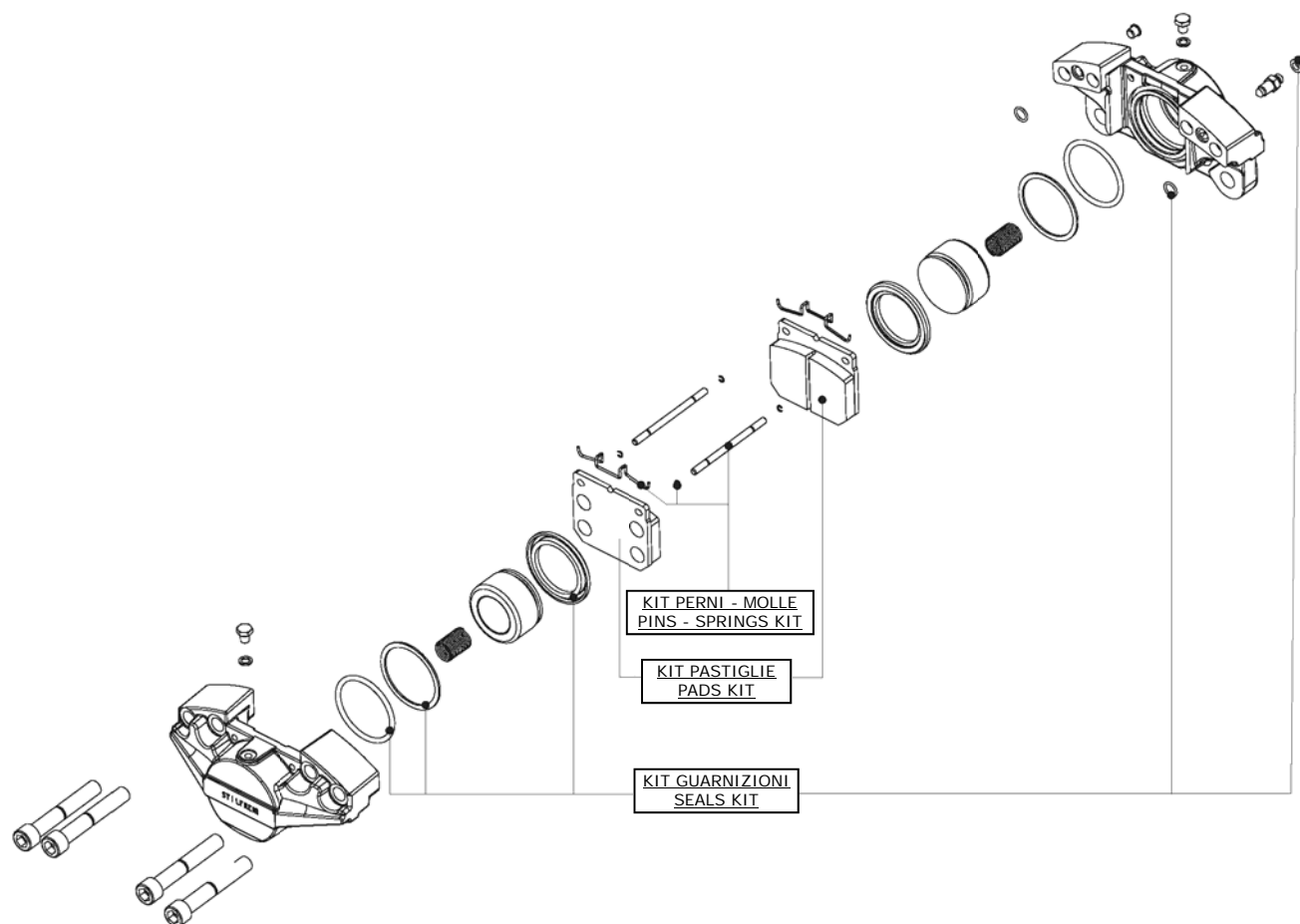
Numero e diametro pistoni	Number and diameter of pistons	2x60	mm
Pressione massima di funzionamento	Maximum working pressure	150	bar
Superficie pastiglie	Pads area	2x50	cm ²
Diametro del disco (min ÷ max)	Disc diameter (min ÷ max)	320 ÷ 600	mm
Spessore disco max e min. usurato	Disc thickness, max and min. worn	15 ÷ 17	mm
Posizione di montaggio	Mounting location	h. 3 & 9	
Fluido di azionamento	Actuation fluid	See below	
Assorbimento volumetrico a 150bar	Fluid displacement at 150 bar	5.6	cm ³
Raggio efficace Re	Effective rolling radium Re	(ØD/2) -33	mm

Compressivi Standard / Standard products

Codice N. Code N.	Fluido di alim. Actuation fluid	"Y"
77030E000	DOT3 DOT4	149.5
1061.2728	Mineral oil	152
1061.2701	Mineral oil	149.5
1061.1701	DOT3 DOT4	152

* Sono a disposizione ulteriori modelli personalizzati;
Further customized products are available;





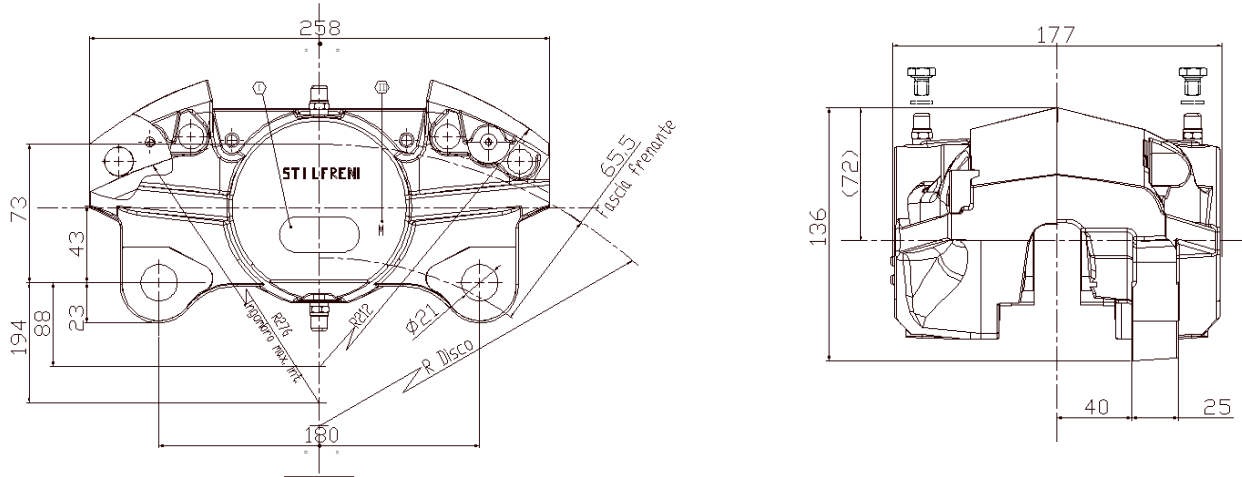
DESCRIZIONE	DESCRIPTION	Codice Code N.
KIT PASTIGLIE	PADS KIT	1069.1407
KIT PERNI—MOLLE	PINS AND SPRINGS KIT	1069.0531
KIT GUARNIZIONI (Olio minerale)	MINERAL OIL SEALS KIT	1069.1301
KIT GUARNIZIONI (Olio freni)	BRAKE FLUID SEALS KIT	1069.0301



PINZA IDRAULICA 2-75 HYDRAULIC CALLIPER

Disegno/Drawing:

TN770600000



APPLICAZIONI TIPICHE — TYPICAL APPLICATIONS



TECHNICAL DATA / DATI TECNICI

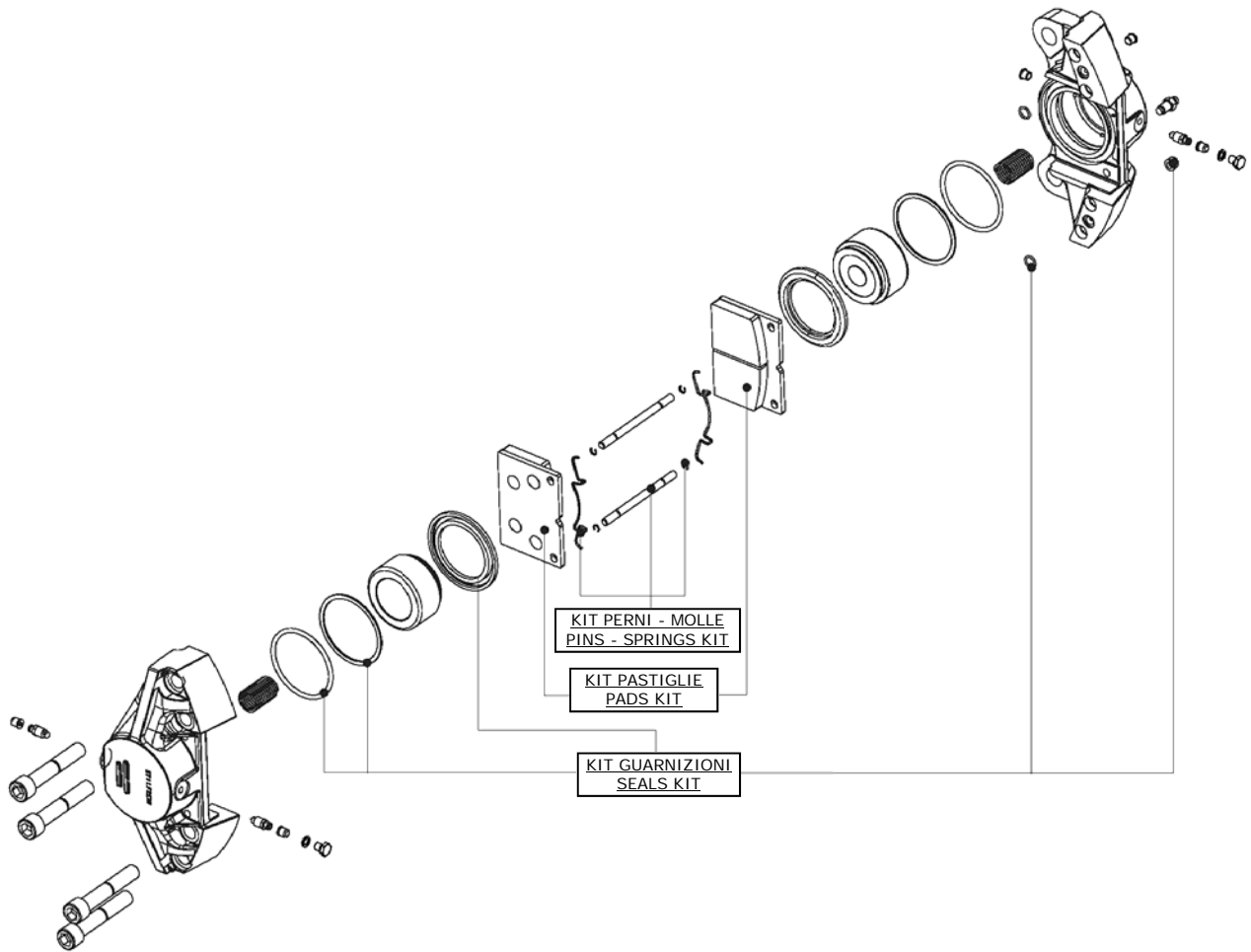
Numero e diametro pistoni	Number and diameter of pistons	2x75	mm
Pressione massima di funzionamento	Maximum working pressure	150	bar
Superficie pastiglie	Pads area	2x70	cm ²
Diametro del disco (min ÷ max)	Disc diameter (min ÷ max)	330 ÷ 700	mm
Spessore disco max e min. usurato	Disc thickness, max and min. worn	20 ÷ 22	mm
Posizione di montaggio	Mounting location	See below	
Fluido di azionamento	Actuation fluid	See below	
Assorbimento volumetrico a 150bar	Fluid displacement at 150 bar	9	cm ³
Raggio efficace Re	Effective rolling radium Re	ØD/2 -31	mm

Complessivi Standard / Standard products

Codice N. Code N.	Pos. Montaggio Assembling position	Fluido di alim. Actuation fluid
77060D000	h6	DOT3 DOT4
1071.2701	H3 (h9)	Mineral oil
1071.2702	H3 - h12 (h9)	Mineral oil
1071.1705	H3 - h12 (h9)	DOT3 DOT4
1071.1701	H3 (h9)	DOT3 DOT4

* Sono a disposizione ulteriori modelli personalizzati;
Further customized products are available;





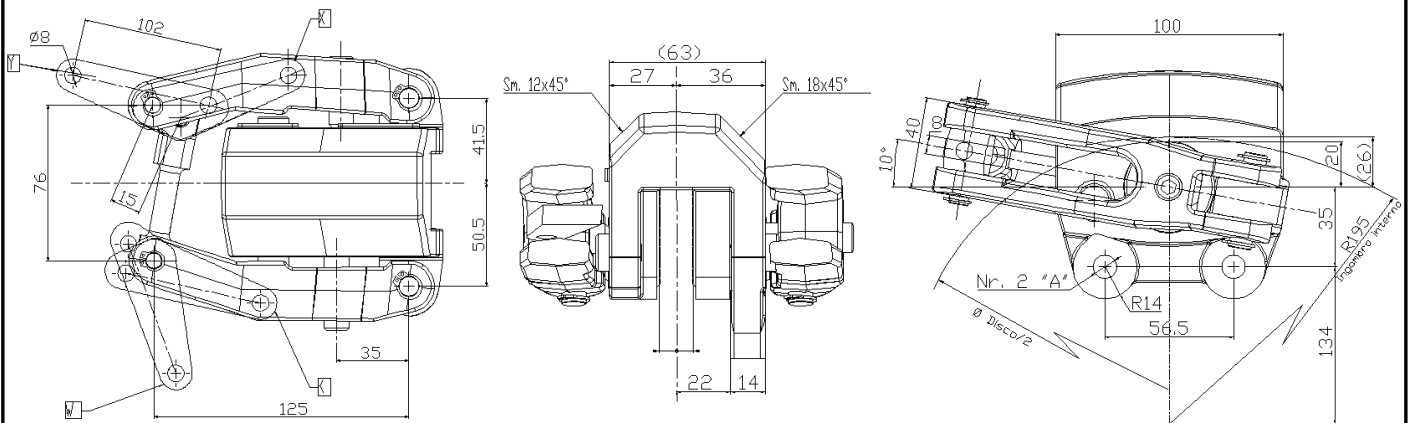
POS. N. DESCRIZIONE	DESCRIPTION	Codice Code N.
KIT PASTIGLIE	PADS KIT	1079.1407
KIT GUARNIZIONI	BRAKE FLUID SEALS KIT	1079.0301
KIT GUARNIZIONI	MINERAL OIL SEALS KIT	1079.1301
KIT PERNI + MOLLE	PINS + SPRINGS KIT	1079.0531



PINZA MECCANICA S48 MECHANICAL CALLIPER

Disegno/Drawing:

TN760100000



APPLICAZIONI TIPICHE — TYPICAL APPLICATIONS



TECHNICAL DATA / DATI TECNICI

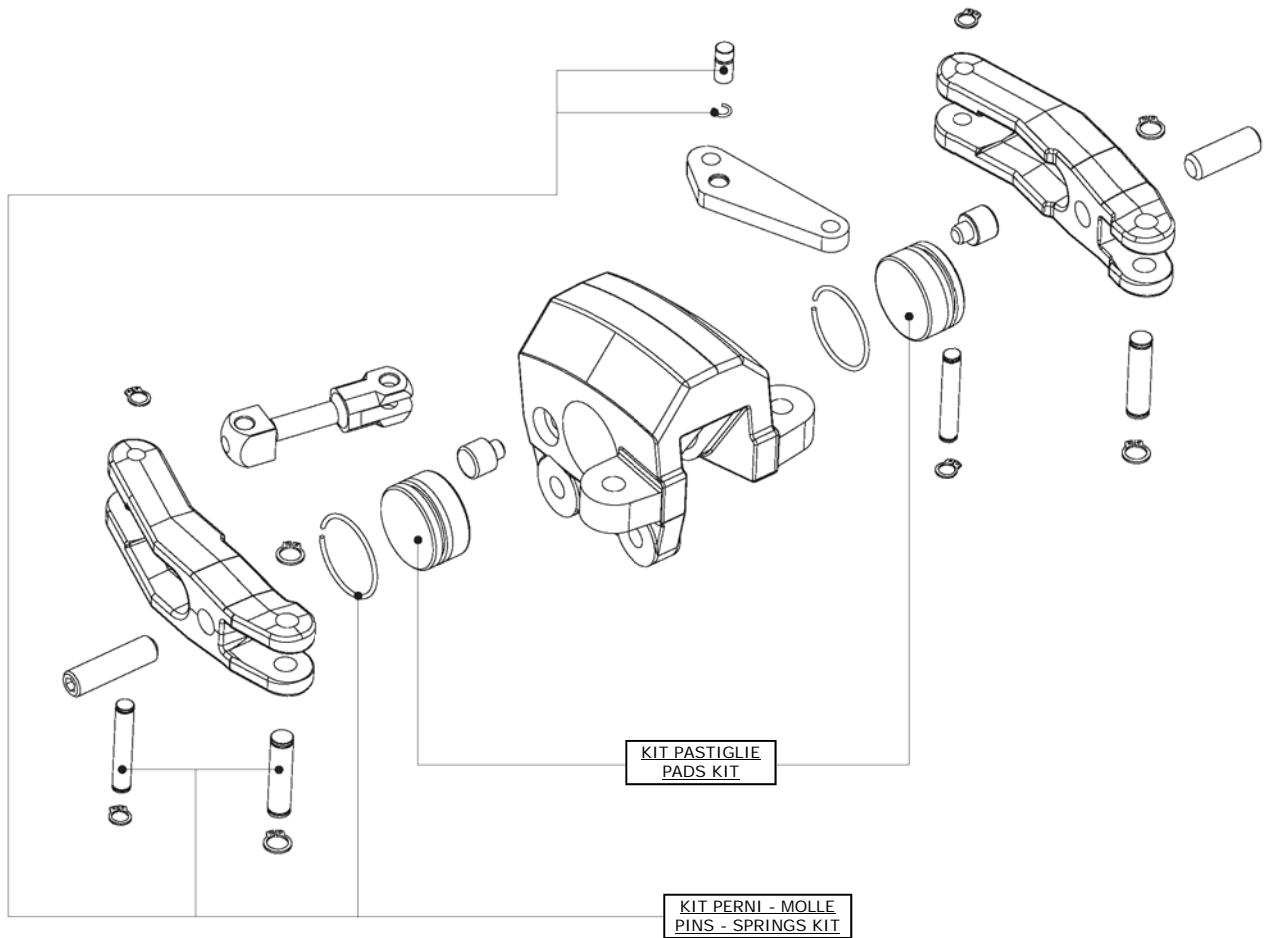
Rapporto di moltiplicazione	Multiplication ratio	16.2	
Forza max applicabile alla leva	Max applicable force to the leverage	1764	N
Angolo di rotazione max della leva	Max rotation angle of the lever	30°	
Forza max di serraggio	Max camping force	2x18250	N
Raggio efficace	Effective radius	Ø D/2-21	mm
Rendimento meccanico	Mechanical efficiency	h=0.9	
Valore coefficiente d'attrito (di progetto)	coeff. Friction material (design purposes)	0.35	
Momento frenante (alla pressione max)	Braking torque (at max pressure)	(Fs*m*Re)/1000	Nm
Area di una pastiglia	Brake pad working area	12.3	cm ³
Peso della pinza freno	Caliper weight	39	N

Compressivi Standard / Standard product

Codice N. Code N.	"A"	Diam. Disco Disc diameter	Spess. Disco Disch thickness	Posizione leva Position lever
2021.0704 DX	10.25	200-500	12-14	K
2021.0706 DX	10.25	200-500	18-20	K
2021.0708 DX	10.25	200-500	20-22	K
2021.0702 DX	10.25	200-350	12-14	X
2021.0753 DX	M12X1 6H	200-500	14-16	Y
2021.0746 DX	10.25	200-500	18-20	X
2021.0741 DX	10.25	200-500	18-20	K
2021.0718 DX	10.25	200-500	12-14	W
2021.0712 DX	10.25	200-500	12-14	Y



* Sono a disposizione ulteriori modelli personalizzati;
Further customized products are available;



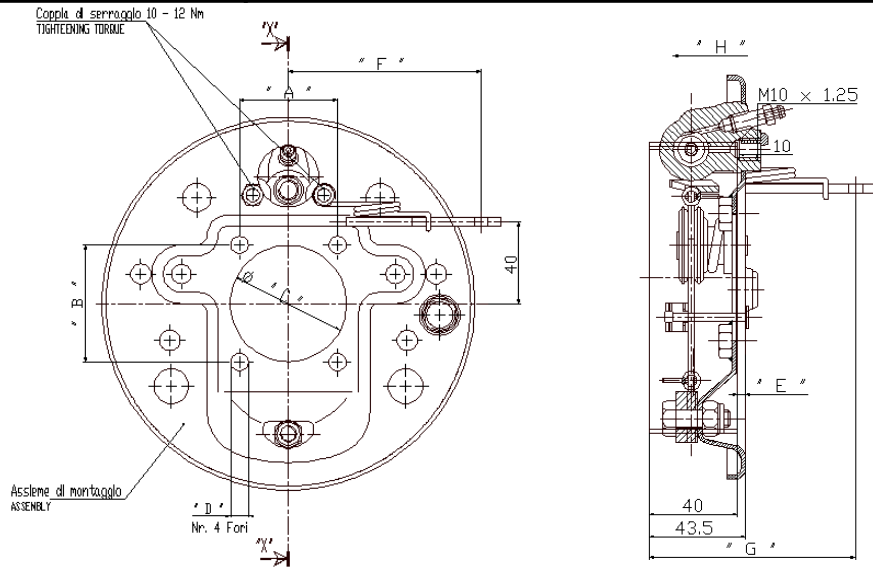
DESCRIZIONE	DESCRIPTION	Codice Code N.
KIT PASTIGLIE	PADS KIT	2029.1408
KIT PERNI—MOLLE	PINS AND SPRINGS KIT	RC76011003



**MASSA FRENANTE Ø 160x40
DRUM BRAKE Ø 160x40**

Disegno/Drawing:

TN740102200



APPLICAZIONI TIPICHE — TYPICAL APPLICATIONS



TECHNICAL DATA / DATI TECNICI

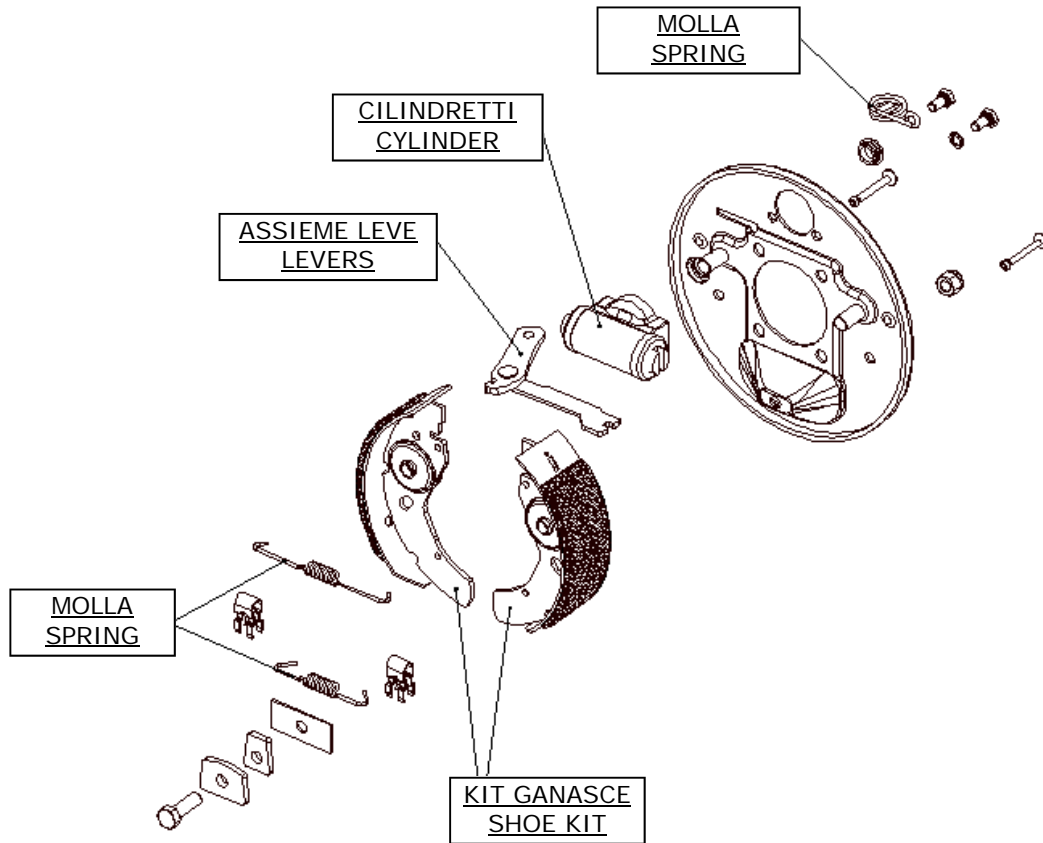
Coppia frenante max.	Max. braking couple	228	Nm
Pressione max. di funzionamento	Max. line pressure	80	bar
Coppia frenante di stazionamento	Hand braking couple	322	Nm
Spessore max. utilizzabile	Max. thickness tolerance	3	mm
Peso del freno a tamburo	Drum brake weight	4	kg

Complessivi Standard / Standard product

Codice N. Code N.	"A"	"B"	"C"	"D"	"E"	"F"	"G"	"H"
741712200 (DX)	48	57.5	57	8.5	4	94.5	92.5	19
741712200 (DX)	48	57.5	57	M8	4	94.5	92.5	16
8011.1742 (DX)	48	57.5	57	8.5	4	70.9	67.8	16
8011.1710 (DX)	65.5	55	57	M8	/	94.5	92.5	16
740312200 (DX)	48	57.5	57	M8	4	70.9	67.8	12.5
740212200 (DX)	48	57.5	57	8.5	4	94.5	92.5	16
8011.1738 (DX)	65.5	55	57	M8	/	94.5	92.5	19



* Sono a disposizione ulteriori modelli personalizzati;
Further customized products are available;



DESCRIZIONE	DESCRIPTION	Codice Code N.
KIT MOLLE	SPRINGS KIT	RC740312206
KIT GANASCE	SHOES KIT	RC740312205
ASSIEME LEVE	LEVERS	RC740312204
CILINDRETTO	CYLINDER	459128



CORAM S.p.A.
Via Chiari, 36
25033 Cologne (BS) - Italy
Ph. +39 030 7058 211
Fax +39 030 7058 240
E-mail info@coramgroup.com
www.coramgroup.com



CORAM SUD S.r.l.
Via Pozzi, 5
64030 Montefino (TE) - Italy
Ph. +39 0861 990 399
Fax +39 0861 990 642
E-mail info@coramgroup.com
www.coramgroup.com



BSM/CORAM North America, Inc.
11950, 12th Avenue
55337 Burnsville (MN)
Ph. +1 952 890 8146
Fax +1 952 890 3829
E-mail info@bsmcoram.com
www.coramgroup.com



CORAM ASIA Co., Ltd.
363, Cheng - Kung 3rd Road
Nan-Kang Industrial Park
54066 Nan-taou City (Taiwan)
Ph. +886 (49) 22 600 26
Fax +886 (49) 22 600 03
E-mail info@coramgroup.com
www.coramgroup.com